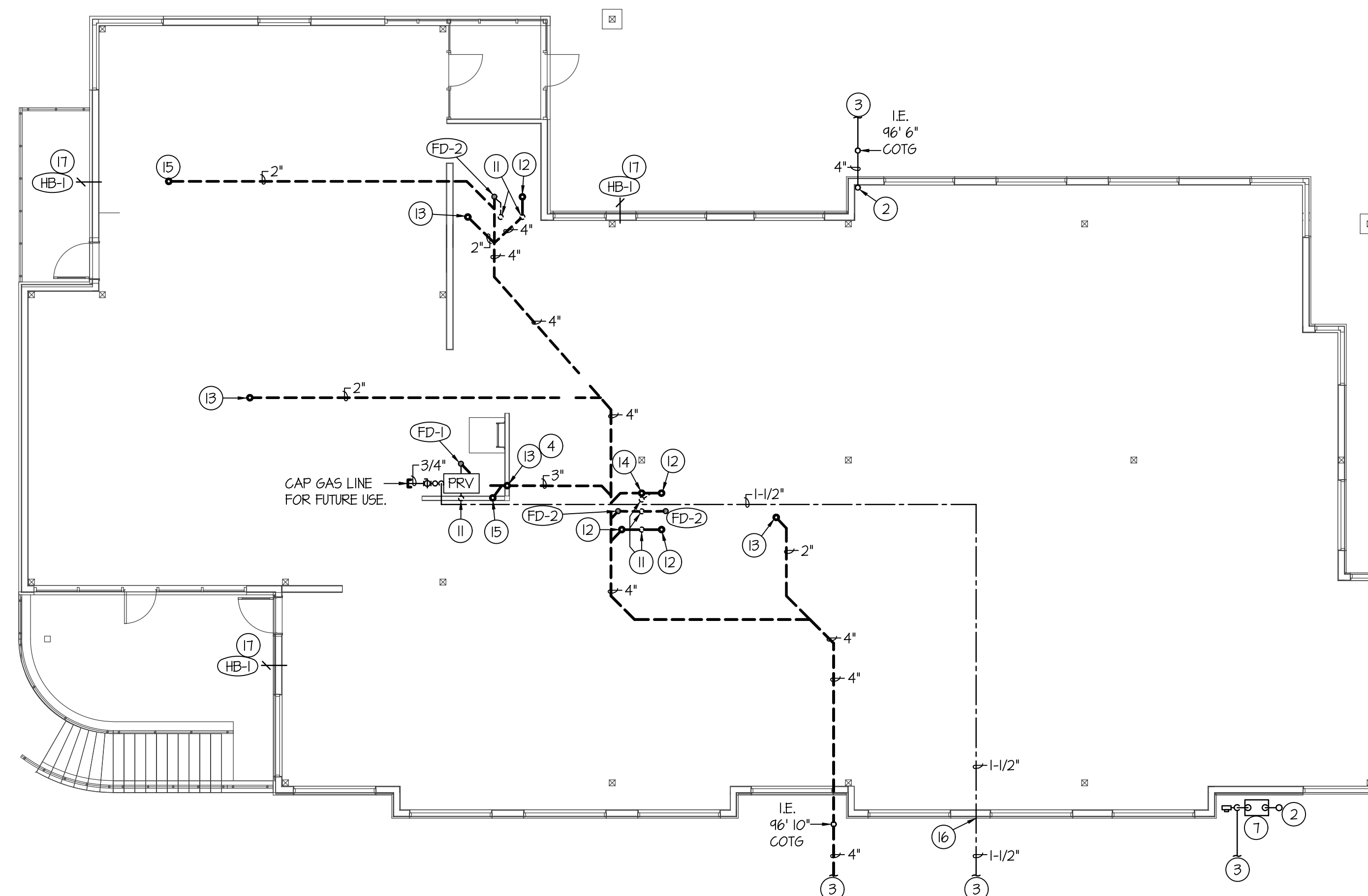


MECHANICAL/PLUMBING ROOF PLAN

SCALE: 1/8" = 1'-0"



MECHANICAL/PLUMBING FLOOR PLAN

SCALE: 1/8" = 1'-0"



PLAN NOTES:

- 1 SEE FLOOR PLAN BELOW ON THIS SHEET FOR CONTINUATION.
- 2 SEE ROOF PLAN ABOVE ON THIS SHEET FOR CONTINUATION.
- 3 SEE SITE PLAN FOR CONTINUATION.
- 4 RUN NEW 1/2" PEX UNDER SLAB FOR NEW FD-2 TRAP PRIMERS TO LOCATION AS SHOWN. CAP FOR FUTURE USE.
- 5 NEW ROOF DRAIN LINE TO BE AT 1/4" SLOPE.
- 6 DROP OR RUN DUCTS AS SHOWN FROM RTU ABOVE. SEE SCHEDULE ON MP201 FOR DUCT SIZES. LEAVE DUCTS OPEN TO SPACE FOR FUTURE CONNECTION.
- 7 GAS METER PROVIDED BY LOCAL GAS COMPANY SIZED FOR (TENANT 1) 310,000 BTU@ AT 5 PSI DELIVERY PRESSURE. ALL GAS PIPING LOCATED ON ROOF TO BE INSTALLED ON PILLON BLOCK SIMILAR TO ERICO PIPE PIER SUPPORTS AT 10' ON CENTER.
- 8 8" OR 10" ROUND DUCT TO ROOF. CAP FOR FUTURE EXHAUST FAN CONNECTION. KEEP MIN 10' FROM ANY INTAKES. SEE M201 FOR DETAILS.
- 9 4" VTR. CAP FOR FUTURE USE.
- 10 HANG THERMOSTAT OFF CONDUIT APPROXIMATELY 5' AFF COIL. 30' OF WIRE FOR FUTURE LOCATION.
- 11 RISE 2" FOR FUTURE VENT.
- 12 RISE 4" AND CAP WITH CLOSET FLANGE FOR FUTURE WATER CLOSET.
- 13 RISE 2" AND CAP FOR FUTURE LAV OR DRINKING FOUNTAIN.
- 14 RISE 2" AND CAP FOR FUTURE URINAL.
- 15 RISE 2" AND CAP FOR FUTURE SINK.
- 16 NEW 1" WATER LINE BELOW SLAB TO BE SOFT COPPER. NO JOINTS BELOW SLAB.
- 17 INSTALL HOSE BIBB FOR FUTURE WATER CONNECTION.
- 18 RUN NEW 1" FOR LAWN SPRINKLING SYSTEM UNDER SLAB TO LOCATION AS SHOWN.

PLUMBING LEGEND

SYMBOL	DESCRIPTION
V	VENT
VTR	VENT THRU ROOF
CO	CLEANOUT
WCO	WALL CLEANOUT
COTG	CLEANOUT TO GRADE
—	PIPE DROP
—	PIPE RISE
—	BALL TYPE ISOLATION VALVE
—	VENT LINE PIPING
—	DOMESTIC COLD WATER PIPING
—	DOMESTIC HOT WATER PIPING
—	HOT WATER RECIRC. PIPING
—	GAS PIPING
—	CONDENSATE DRAIN PIPING
—	ROOF DRAIN PIPING
—	ROOF OVERFLOW DRAIN PIPING

MECHANICAL LEGEND

SYMBOL	DESCRIPTION
(T)	ELECTRONIC THERMOSTAT
(E)	EQUIPMENT SYMBOL
HD	HAND DAMPER
RB	ROUND BRANCH DUCT WITH HAND DAMPER
IFD	INSULATED FLEXIBLE DUCT
RA/EG	RETURN AIR OR EXHAUST GRILLE
CD	CEILING DIFFUSER

GENERAL NOTES:

- A- THE CONTRACTOR SHALL CHECK AND VERIFY ALL DIMENSIONS AND CONNECTIONS ON THE JOB SITE. ALL WORK SHALL BE EXECUTED FROM MEASUREMENTS TAKEN AT THE SITE.
- B- THE MECHANICAL CONTRACTOR SHALL BE RESPONSIBLE TO INSURE PROPER CODE CLEARANCES FOR ELECTRICAL AND MECHANICAL ACCESS WHEN INSTALLING ANY EQUIPMENT SUPPLIED BY THE MECHANICAL CONTRACTOR.
- C- IT IS CRITICAL THAT THIS CONTRACTOR COORDINATE EQUIPMENT LOCATIONS WITH PIPING, DUCTWORK, ELECTRICAL CONDUIT AND BUILDING STRUCTURE TO INSURE CODE COMPLIANCE.
- D- CEILING DIFFUSERS ARE SHOWN IN APPROXIMATE LOCATIONS. REFER TO LIGHTING PLANS AND REFLECTED CEILING PLAN FOR EXACT LOCATIONS.
- E- DUCT DIMENSIONS CALLED OUT ON DRAWINGS ARE INSIDE FREE AREA DIMENSIONS. ACOUSTICAL DUCT LINER ARE TO BE ADDED TO OVERALL MEASUREMENTS.
- F- ALL DUCTWORK AND PIPING WHICH PASSES THRU FIRE RATED WALLS TO BE FIRE STOPPED WITH APPROVED FOAM OR SEALANT. REFER TO SPECIFICATIONS FOR APPROVED MANUFACTURERS.

REGISTERED PROFESSIONAL ENGINEER
No. 322307
DWAYNE C. SUDWEEKS
STATE OF UTAH

Engineered Systems Associates
1355 EAST CENTER
POCATELLO, IDAHO 83201
PHONE: (208) 233-0501
FAX: (208) 233-0529
EMAIL: esa@engsystems.com
ESA JOB NUMBER: 19010



PROJECT: **New Building Shell For: KIER MANAGEMENT BUILDING**
 1012 CHAMBERS STREET,
 SOUTH OGDEN, UTAH 84403
 MOUNTAIN WEST ARCHITECTS | 543 25TH STREET - OGDEN, UT 84401 PH: 801-388-6052 www.mountainwestarchitects.com

SHEET TITLE: **MECHANICAL & PLUMBING PLAN**
 SHEET NUMBER: **MP101**
 PROJECT: **CM-JOB-KIER-MANAGEMENT**
 DO NOT SCALE DRAWING

REV. DATE DESCRIPTION

06-26-19	PERMIT SET
----------	------------